

PART OF S.E. 1/4
SECTION 5, T.6N.,R.1W., S.L.B.&M.

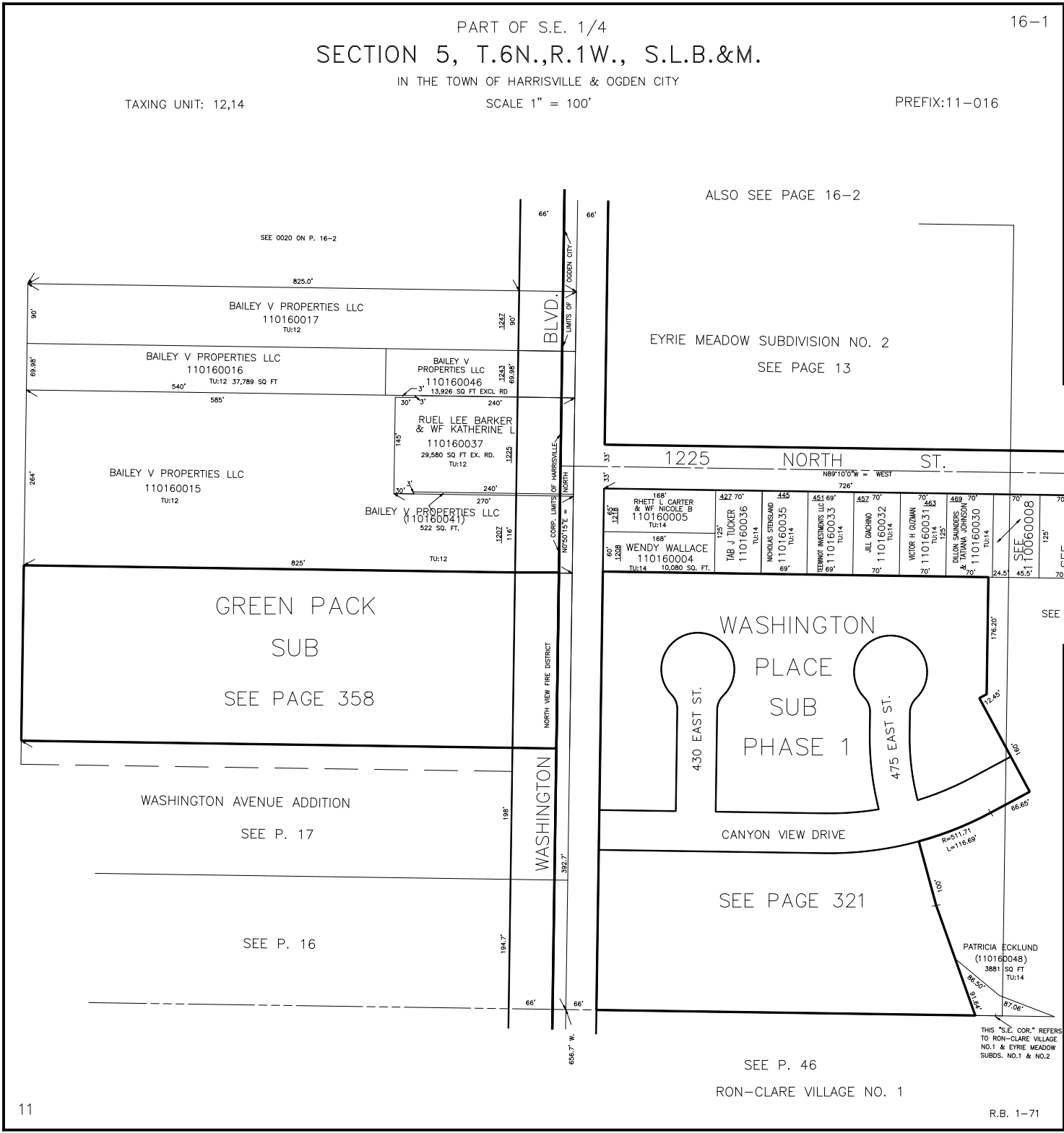
16-1

IN THE TOWN OF HARRISVILLE & OGDEN CITY

TAXING UNIT: 12,14

SCALE 1" = 100'

PREFIX:11-016



ALSO SEE PAGE 16-2

EYRIE MEADOW SUBDIVISION NO. 2
SEE PAGE 13

1225 NORTH ST.

168' 125' 168'	422 70' 125'	445' 89'	451 69' 89'	442 70' 70'	70' 70'	463' 125'	468 70' 80'	70' 45.5'	70' 70'
RHETT L CARTER & WF NICOLE B 110160005 TU:14	TAB J TUCKER 110160036 TU:14	NICHOLAS BERGLUND 110160035 TU:14	REYNOLD WISHEMANS LLC 110160033 TU:14	JILL COCHINO 110160032 TU:14	VICTOR H GUDMAN 110160031 TU:14	PILON SAMUELS & TATIANA JOHNSON 110160030 TU:14	SEE 110060008	SEE 110060011	SEE 110060013
168' 10,080 SQ. FT.	125'	89'	89'	70'	70'	80'	45.5'	70'	70'
WENDY WALLACE 110160004 TU:14									

GREEN PACK
SUB
SEE PAGE 358

WASHINGTON AVENUE ADDITION
SEE P. 17

SEE P. 16

WASHINGTON
PLACE
SUB
PHASE 1

SEE PAGE 321

SEE 110060006

PATRICIA ECKLUND
(110160048)
3881 SQ FT
TU:14

EYRIE MEADOW
SUBD. NO. 1
SEE P. 7

SEE P. 46

RON-CLARE VILLAGE NO. 1

THIS "S.E. COR." REFERS TO RON-CLARE VILLAGE NO.1 & EYRIE MEADOW SUBDS. NO.1 & NO.2